

vScan & vScanM

Pipe & cable locator for avoidance & tracing applications



vScan features and options

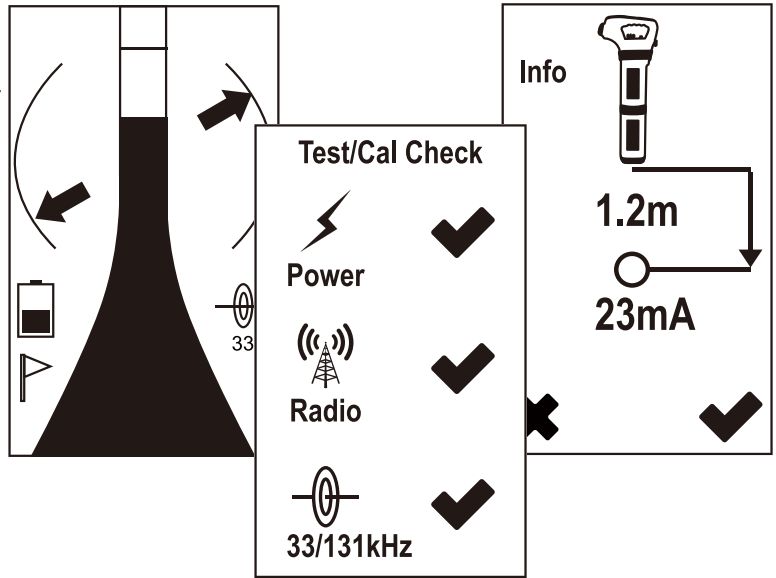
- **Compass (line direction indicator)**
- **Self-test and calibration verification**
- **Data logging and data management software**
- **Configuration utility - personalize your vScan**
- **Metal cover locating mode**
- **Lithium ion rechargeable batteries**
- **Internal or external GPS**
- **Bluetooth**

***The ideal choice for the novice through
to the skilled technician***



Making locating easier.....

- Power and Radio modes - for passive locating
- 33kHz & 131kHz for active locating using optional transmitter
- Sonde mode (33kHz)
- M mode for locating metal covers (vScanM only)
- Rotary control for sensitivity
- Paddle control for mode and navigation
- Two pushbuttons - on/off and depth/menu/select
- High contrast display with backlight
- Compass - arrows indicate line direction
- Depth and current measurement (configurable)
- Both internal & removable loudspeakers
- Internal or external GPS (optional)



A new standard for safety.....

- Self-test/calibration verification - confirms 100% locate functionality
- User settings for warnings/alerts
 - ▶ Visual
 - ▶ Vibrate warning
 - ▶ Audio warning
 - ▶ Shutdown
- **Warnings/alerts**

Swing Alert - indicates when detecting excessive movement

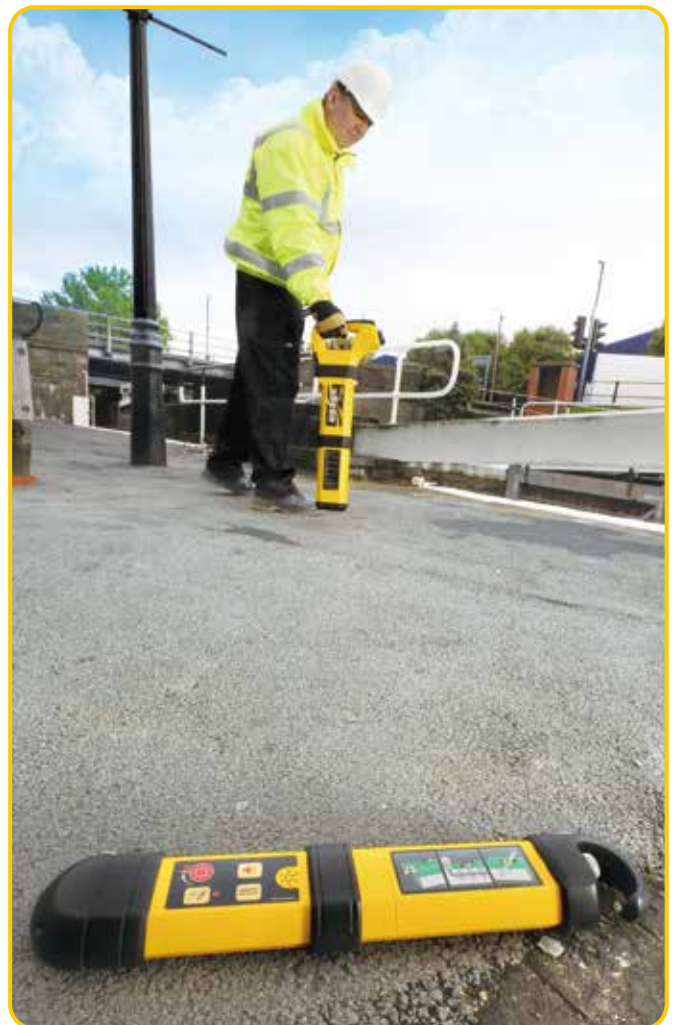
Shallow Line Alert - warns of the presence of shallow line

Signal Overload Alert - indicates excessive signal

Overhead Signal Alert - warns of strong overhead signals

Action Required Alert

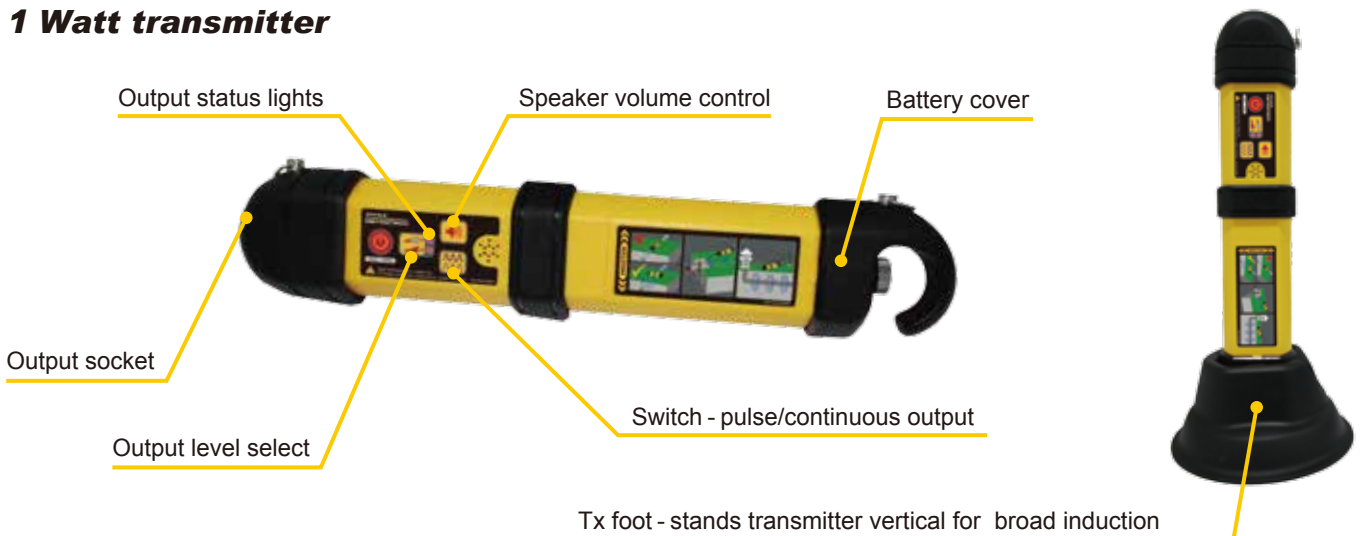
Select warnings, and how they communicate.
Warnings advise but do NOT interrupt the locating process.



vScan Receiver



1 Watt transmitter



The vScan Transmitter

When using the direct connection output. The transmitter produces a full 1W output and transmits 33kHz & 131kHz simultaneously, the signal can be applied by direct connection, induction 33kHz or an inductive clamp (optional – 50mm – 100mm and 125mm diameter).

The vScan saves you time.....saves you money



Warnings/Alerts - provide information - they do **NOT** interrupt locating - configure them, using MyvScan, to receive a visual warning, audible warning, a sharp vibrate in the handle or all three. Some warnings can be configured to shut the unit down.



Self-test and calibration verification - check the vScan is working correctly - on demand or on a schedule you define in MyvScan. If work/safety practice allows, send the vScan for recalibration only if it fails self-test and calibration verification. Upload from the vScan a history of self-tests and calibration verification. Print a calibration certificate.



Scheduler - schedule maintenance, rental period, self-test/calibration verification schedule, or prompt to upload data. Define and select these warnings/alerts/reminders.



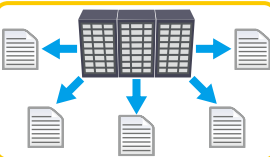
Personalize - add owner/user information, a background picture or logo, or a short message (such as..... "If found call 0800-xxx-xxxx"). Also set preferred start up mode.



Lock Feature - all configurations can be locked, enabling equipment or safety officers to ensure that features selected or removed by management cannot be over ridden by the user. (Requires optional lockout dongle)



Software updates and data transfer - MyvScan checks for updates for the locator or desktop software whenever connected to internet. Connect the locator to MyvScan to load the software to the locator. Connect the locator to MyvScan to load the software and transfer data.



Data Management - MyvScan provides a variety of ways to select, sort and filter data. It enables the user to create selection/report templates. The data can be viewed on the computer display, saved, or exported as .xls, .csv, .kml, .jpg, .pdf files.

Other ways vScan saves you money



Standard with all vScan transmitters.....

The "Dragon" - a connection lead kit that virtually eliminates tangled leads, and helps to ensure that items like magnets and ground/earth stakes are not forgotten.

(**Note:** Magnets are supplied as standard in UK)



Rechargeable Batteries - Don't waste money on Alkaline batteries.....

vScan's rechargeable battery (option) for both receiver and transmitter uses Lithium ion batteries. High capacity, no memory and the ability to hold a charge for a long time makes Lithium ion a most practical rechargeable choice. (Alkaline batteries can still be used if for any reason you run down or forget to charge the batteries.)

vScan and vScanM Receivers.....Premium features included as standard

RECEIVER

Feature	vScan	vScanM
High contrast display with back light	✓	✓
On/Off & depth/select pushbuttons	✓	✓
Rotary gain/sensitivity control	✓	✓
Paddle for navigating menus and modes	✓	✓
Power Mode	✓	✓
Radio Mode	✓	✓
Active Modes 33kHz & 131kHz	✓	✓
Sonde Mode 33kHz	✓	✓
Metal Locate Mode		✓
Internal & removable loudspeakers	✓	✓
Removable wear boot	✓	✓
Alkaline batteries (6 x AA's)	✓	✓
Lithium ion rechargeable battery pack (& charger)	○	○
Carry bag	Standard when purchased with RX & Tx	
Depth measurement (configurable)	✓	✓
Current measurement (configurable)	✓	✓
Compass (line direction indicator)	✓	✓
Self-test and calibration verification	✓	✓
Recording of test/cal history	✓	✓
Printed cal certificate (using MyvScan)	✓	✓
Swing Alert	✓	✓
Shallow Line Alert	✓	✓
Signal Overload Alert	✓	✓
Overhead Signal Alert	✓	✓
Action Required Alert	✓	✓
Alert Notification (display, audio, vibrate, shutdown)	✓	✓
Battery Condition Status/Alert	✓	✓
Data logging	✓	✓
Bluetooth	○	○
Internal GPS	○	○
External GPS	○	○
MyvScan - Product configuration utility	✓	✓
MyvScan - Data transfer and management application	✓	✓
Pre-defined reports	✓	✓
Custom reporting	✓	✓

* ✓ = standard, ○ = optional

TRANSMITTER

Feature	vScan/vScanM Transmitter
1 Watt output	✓
High/low output selection	✓
Pulse/continuous output	✓
Simple pushbutton controls/LED's	✓
Connection frequency - 33kHz/131kHz (simultaneous transmission)	✓
Clamp frequency - 33kHz/131kHz	✓
Induction frequency - 33kHz	✓
Tone change to indicate good connection	✓
Alkaline batteries (4 x D cells)	✓
Lithium ion battery and charger	○
Low battery warning	✓
The Dragon connection lead kit comprising:	
Dragon (tangle free - cable tidy)	✓
Connection leads	✓
Ground/earth stake	✓
2 x Magnets (UK market only)	✓
Tx foot - broad induction stand	✓

ACCESSORIES

Receiver - Lithium ion battery and charger	○
Transmitter - Lithium ion battery and charger	○
Extension ground cable	○
50mm (2 inch) transmitter clamp	○
100mm (4 inch) transmitter clamp	○
125mm (5 inch) transmitter clamp	○
Clamp extension rod	○
Live plug connector (240V AC)	○
Live cable connector (480V AC)	○
D18 sonde	○
D38 sonde	○
D64 sonde	○

Factory Fitted Options – must be specified when ordering

Bluetooth (internal)
GPS (internal or external)



Accessories

Transmitter

1 watt transmitter, 33kHz & 131kHz, simultaneous output modes, auto switching connection, induction and (optional) clamp includes carry strap for hands free carrying and "backache free" inductive sweeps.



Carry bag

Supplied free when purchasing receiver and transmitter together. Available as an option if purchasing a receiver only.



Live plug connector (240V AC)



Extension ground cable



Receiver/Transmitter rechargeable battery packs



50mm, 100mm, 125mm sizes
Transmitter clamps



Clamp extension rod



18mm

38mm

64mm

Sondes

Distributed by:



20 Neilpark Drive
East Tamaki
Auckland, 2013
NEW ZEALAND

p: +64 9 274 3340
0800 442 182
f: +64 9 274 5490
0800 442 183
e: sales@transnet.co.nz
w: www.transnet.co.nz